



Hensby Avenue, Buntingford

SG9 9RG

Asking Price
£865,000



4



3



2



B

Hensby Avenue, Buntingford

DESCRIPTION

Hunters are delighted to offer 'The Balmoral' style detached property in an exclusive Redrow development within Buntingford. The property features four bedrooms, lounge, sitting room, kitchen with integrated appliances, cloakroom, three bathrooms, landscaped East facing garden and a double garage with driveway for four vehicles.

- Redrow 'Balmoral' style detached four bedroom family home
- Separate sitting room
- Separate utility room
- Family bathroom plus two en-suites
- Landscaped East facing garden with gazebo and feature lighting
- Dual facing lounge with access to garden
- Shaker style kitchen
- Spacious dining room with access to garden
- Leaded double glazing
- Double garage with parking for four vehicles

ROOMS

Entrance Hall

Spacious entrance hall. Window to front aspect. Understairs cupboard with clothes rail and shoe rack. Amtico wood effect flooring. Radiator. Stairs to first floor. Doors to:

Sitting Room

13'8" x 10'4"

Bay window to front aspect. Shutters. Amtico wood effect flooring. Window to side aspect. Radiator,

Lounge

21'5" x 12'5"

Dual aspect lounge. Window to front aspect. Patio doors to rear. Air conditioning. Radiators. Double doors to dining area.

Kitchen

13'2" x 9'5"

Range of Shaker style wall and base level units in the colour stone. Quartz countertop and splashbacks. Fully integrated; double oven, double fridge freezer, 6 ring gas hob with extractor over and dishwasher. Two inset stainless steel sink units with mixer tap and Quartz inset drainer. Amtico wood effect flooring. Radiator. Window to rear aspect. Door to utility room. Leading to:

Utility Room

5'10" x 5'3"

Shaker style wall and base level units in the colour Stone. Quartz countertop and splashback. Single stainless steel inset sink unit with chrome mixer tap. Houses boiler (serviced September 2023) and Consumer unit. Space for washing machine and space for tumble dryer. Amtico flooring. Door to side access.

Dining Area

14'2" x 11'7"

Amtico wood effect flooring. Radiator. Patio doors to garden.

Cloakroom

5'3" x 4'0"

Floating sink. Low level flush w/c. Radiator. Extractor fan.

First Floor

Galleried landing. Shelved airing cupboard. Cupboard housing water tank. Access to unboarded loft with ladder. Doors to:

Master Bedroom

16'2" x 15'3"

Spectacular Master bedroom with bay window to front aspect. Built in wardrobes and dressing table. Matching free-standing bedside tables. Radiator. Door to en-suite.

En-Suite

9'8" x 5'10"

Window to front aspect. Double length vanity unit. Low level flush w/c. Radiator. Fan.

Bedroom Two

13'2" x 11'3"

Window to rear aspect. Radiator. Double doors to lounge.

En-Suite

7'7" x 4'3"

Window to rear aspect. Double length vanity unit. Low level flush w/c. Chrome ladder style radiator. Fully tiled.

Bedroom Three

12'5" x 10'4"

Window to rear aspect. Fitted wardrobe. Radiator.

Bedroom Four

11'1" x 10'10"

Window to front aspect. Radiator.

Family Bathroom

7'7" x 7'5"

Window to rear aspect. Bath with shower. Double vanity unit. Low level flush w/c. Chrome ladder style radiator.

Outside

Front

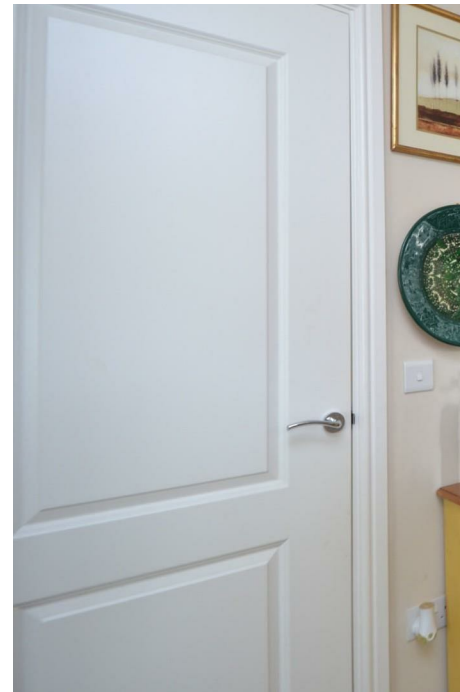
Front garden mostly laid to lawn with mature shrubs. Front door with privacy window. Driveway to garage.

Garage

Double garage with electric up and over door.

Rear

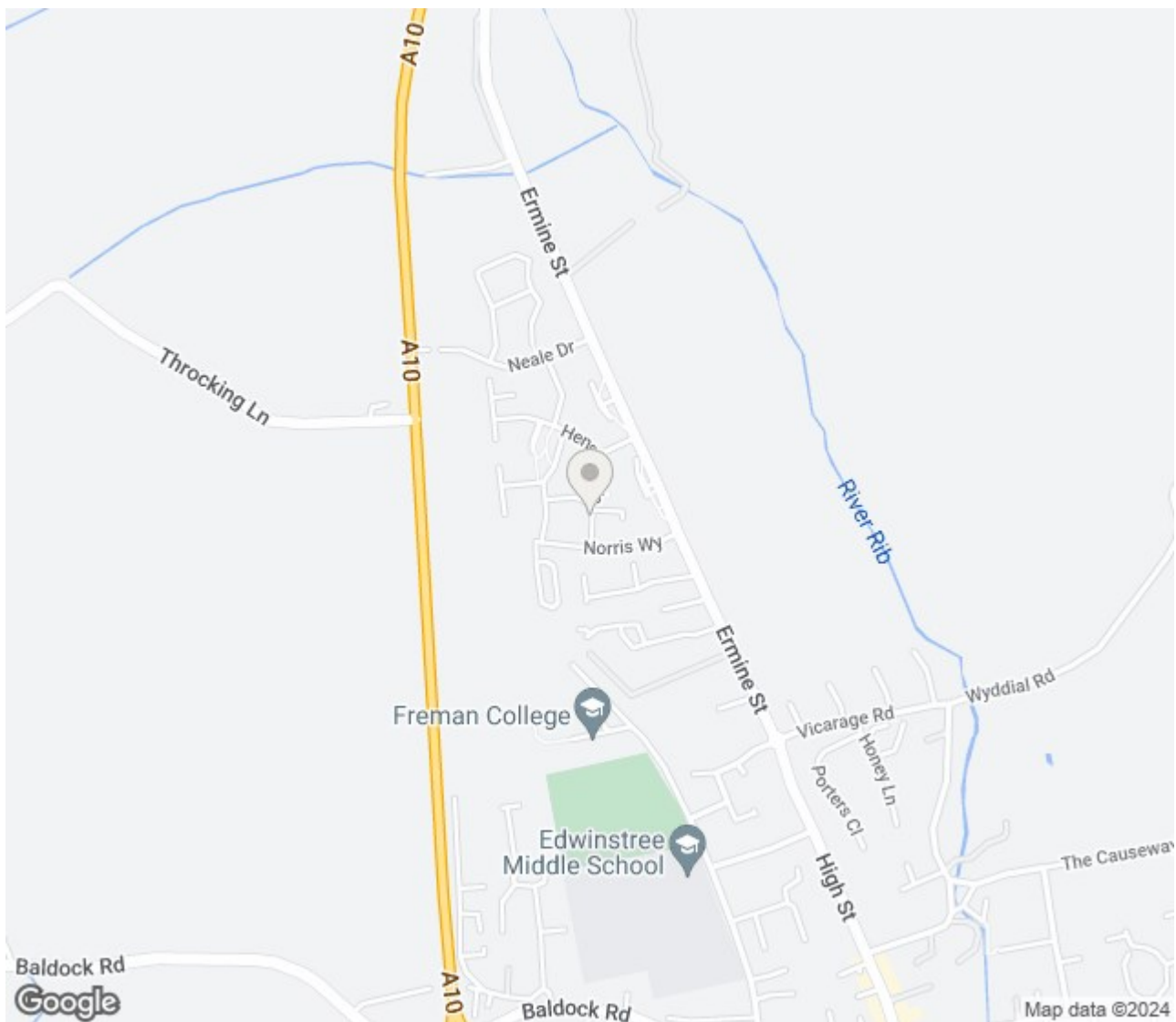
Beautifully landscaped East facing garden with mature shrubs. Gazebo with Indian stone floor. Side gate to driveway.











Thinking of Selling?

If you are thinking of selling your home or just curious to discover the value of your property, Hunters would be pleased to provide free, no obligation sales and marketing advice. Even if your home is outside the area covered by our local offices we can arrange a Market Appraisal through our national network of Hunters estate agents.

34 High Street, Buntingford, SG9 9AQ | 01763 272391 | buntingford@hunters.com

E
C

En

Very

(92

(81-

(69-

(55-

(39-

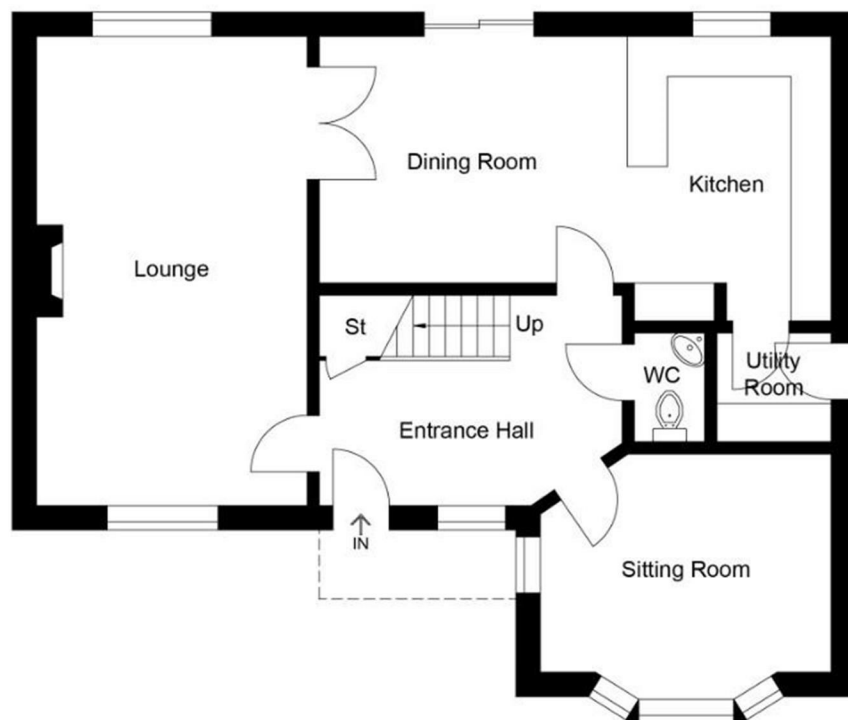
(21-

(1-2

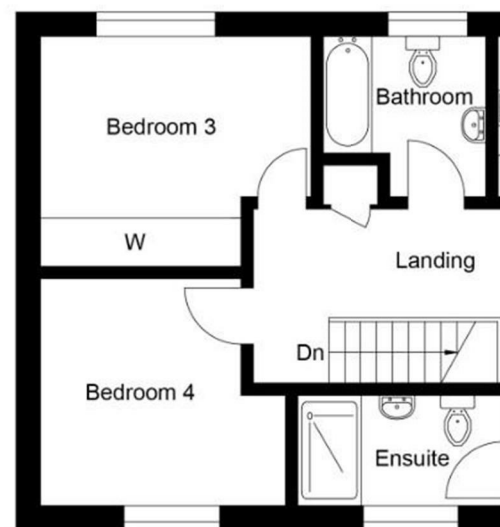
Not

E





Ground Floor



First Floor

Illustration for identification purposes only, measurements are approximate